

MONTHLY MEMBERSHIP PROGRESS REPORT

District 12 I

Results as of: 5/31/2024

GMT:

LOCATION TENNESSEE

GMT CA

Clubs			
RESULTS FOR 2023-2024			
QUARTER	NEW CLUB GOAL	NEW CLUBS	DROPPED CLUBS
JULY/AUG/SEPT	0	0	0
OCT/NOV/DEC	1	0	0
JAN/FEB/MAR	0	0	0
APR/MAY/JUNE	0	0	0

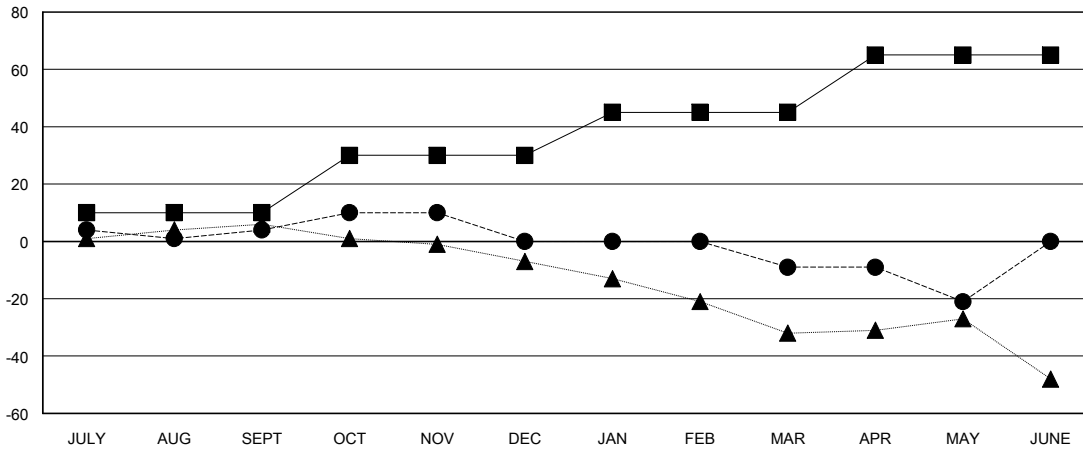
Members			
RESULTS FOR 2023-2024			
QUARTER	MEMBER GROWTH NET GOAL	MEMBER GROWTH ACTUAL	DROPPED MEMBERS ACTUAL (including transfers)
JULY/AUG/SEPT	10	15	10
OCT/NOV/DEC	20	15	19
JAN/FEB/MAR	15	18	25
APR/MAY/JUNE	20	6	18

GOALS AND ACTUAL NEW CLUBS CUMULATIVE



- - CURRENT YEAR GOALS FOR NEW CLUBS
- - CURRENT YEAR ACTUAL NEW CLUBS
- ▲ - LAST YEAR ACTUAL NEW CLUBS

GOALS AND ACTUAL MEMBERS CUMULATIVE



- - MEMBER GROWTH NET GOAL
- - MEMBER GROWTH ACTUAL
- ▲ - LAST YEAR MEMBERSHIP ACTUAL

DROPPED CLUBS: 0	21 CLUBS OF 35 ADDED 1 OR MORE NEW MEMBERS	GENDER DISTRIBUTION
		MALE 518 (63.17%)
		FEMALE 302 (36.83%)
DROPPED MEMBERS	CLICK HERE FOR CUMULATIVE MEMBERSHIP DATA	TOTAL FAMILY UNIT MEMBERS 181
DECEASED 12		FAMILY MEMBERS PAYING HALF DUES 91
CLUB CANCELLED 0		
OTHER 60		
TOTAL 72		